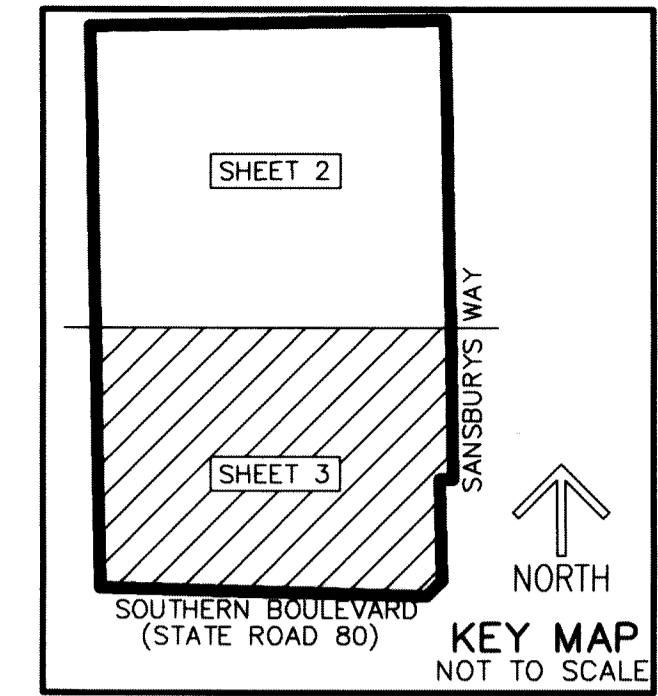


# RANGER AT SANSBURYS WAY MUPD

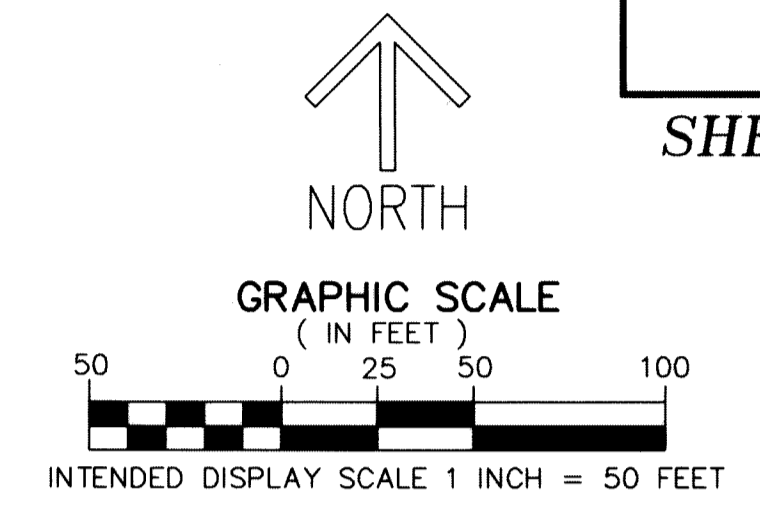
BEING A REPLAT OF PORTIONS OF TRACTS 29, 32 AND 41 AND THAT 30' RIGHT-OF-WAY LYING BETWEEN TRACTS 32 AND 41, BLOCK 7, PALM BEACH FARMS CO. PLAT NO. 3, AS RECORDED IN PLAT BOOK 2, PAGES 45 THROUGH 54 OF THE PUBLIC RECORDS OF PALM BEACH COUNTY, FLORIDA, LYING IN SECTIONS 31 AND 32, TOWNSHIP 43 SOUTH, RANGE 42 EAST, PALM BEACH COUNTY, FLORIDA

MATCH LINE SHEET 2



196

SHEET 3 OF 3



THIS INSTRUMENT PREPARED BY  
DAVID P. LINDLEY  
OF  
**CAULFIELD & WHEELER, INC.**  
SURVEYORS - ENGINEERS - PLANNERS  
7900 GLADES ROAD, SUITE 100  
BOCA RATON, FLORIDA 33434 - (561)392-1991  
CERTIFICATE OF AUTHORIZATION NO. LB3591

- LEGEND/ABBREVIATIONS**
- ⊙ - CENTERLINE
  - Δ - DELTA (CENTRAL ANGLE)
  - CB - CHORD BEARING
  - CD - CHORD DISTANCE
  - DE - DRAINAGE EASEMENT
  - E - EASTING (WHEN USED WITH COORDINATES)
  - F.D.O.T. - FLORIDA DEPARTMENT OF TRANSPORTATION
  - L - ARC LENGTH
  - LB - LICENSED BUSINESS
  - LME - LAKE MAINTENANCE EASEMENT
  - MUPD - MULTIPLE USE PLANNED DEVELOPMENT
  - N - NORTHING (WHEN USED WITH COORDINATES)
  - O.R.B. - OFFICIAL RECORD BOOK
  - P.B.C. - PALM BEACH COUNTY
  - PBCUE - PALM BEACH COUNTY UTILITY EASEMENT
  - R - RADIUS
  - R/W - RIGHT-OF-WAY
  - S.F.W.M.D. - SOUTH FLORIDA WATER MANAGEMENT DISTRICT
  - UE - UTILITY EASEMENT
  - PRM - DENOTES PERMANENT REFERENCE MONUMENT SET 4" X 4" X 24" CONCRETE MONUMENT WITH ALUMINUM DISK STAMPED "C&W PRM LB3591"
  - ▲ - DENOTES HORIZONTAL CONTROL POINT
  - ▲ - DENOTES SET PERMANENT REFERENCE MONUMENT NAIL AND DISK STAMPED "PRM" LB 3591

- NOTES**
- COORDINATES, BEARINGS AND DISTANCES**
- COORDINATES SHOWN ARE GRID  
DATUM = NAD 83 (90 ADJUSTMENT)  
ZONE = FLORIDA EAST  
LINEAR UNIT = US SURVEY FEET  
COORDINATE SYSTEM 1983 STATE PLANE  
TRANSVERSE MERCATOR PROJECTION  
ALL DISTANCES ARE GROUND, UNLESS OTHERWISE NOTED  
SCALE FACTOR = 1.000022794  
GROUND DISTANCE X SCALE FACTOR = GRID DISTANCE  
BEARINGS AS SHOWN HEREON ARE GRID DATUM  
NAD 83 (90 ADJUSTMENT), FLORIDA EAST ZONE.

